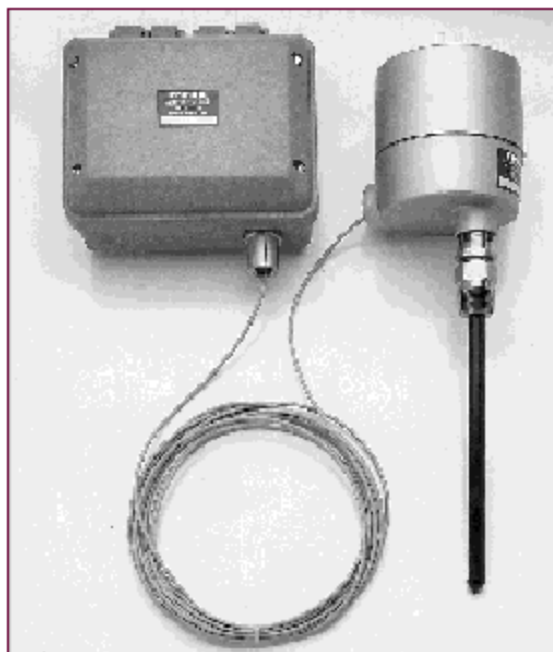


*Instrumentation designed
with the user in mind.*

Remotely Adjustable, Versa-Point™, Dual Function, Four-Point Level Controller

Field Configurable Functions:
- Four Control Points
- Two Points and Zone Control



Features

- ❑ **Remote Adjustment and Control** – Minimizes the need to work in high places, inaccessible or hazardous locations, and inclement weather. Adjustment of control functions can be made up to 3,000 feet (over 1/2 mile) away from sensor assembly. Connections are made with ordinary three-conductor cable – no fragile, difficult-to-install coaxial cables.
- ❑ **Wide Range of Applications** – The ideal multiple-point controller, it will operate in conjunction with process materials which range from low dielectric (insulating) products, such as refined oils, to conductive slurries; even sticky materials that tend to cling to the probe.
- ❑ **Single Probe** – Rugged, corrosion-resistant, no moving parts. Easy installation and maintenance.
- ❑ **Time Delay Included** – 0-30 second delay on each individual point.
- ❑ **NULL-KOTE™ Circuitry** – Makes the sensor immune to adverse effects from conductive coating build up.
- ❑ **Quick Calibration** – Easy, rapid set up and adjustment. Factory precalibration available.
- ❑ **Easy-On Probe Connection** – Automatically provides simple, fast, permanent installation and reliable operation without wires, connectors, or terminal strips. Simply screw probe into the housing.
- ❑ **Weatherproof Control Unit** – NEMA 4X.
- ❑ **Explosion-Proof/Weatherproof Remote Sensor Head** – Class I, Groups C & D, Class II Groups E, F, & G/NEMA 4.

Description

PRINCO's L2740 Versa-Point™ gives you the safety and convenience of remote mounting plus the flexibility of either four independent set points or zone control with two additional set points.

Remote adjustability minimizes the need for personnel to climb high tanks, silos, bins, or enter other hazardous locations.

The distance between the sensor assembly and the control unit can be as great as 3,000 feet (over 1/2 mile). The control panel and sensor assembly are connected by ordinary three-conductor cable.

The L2740's flexibility means that you can field select the type of control you want. When set up as a four-point level controller, it is an ideal multiple point level alarm for applications requiring high alarm, high-high alarm, low alarm, and low-low alarm, all operating from a single probe.

As a zone control with two additional level points, it is ideal for lift stations, batching operations, and industrial sumps. Both set points, which define the zone as well as the two level points, are independently adjustable. Mode of operation for

zone control may be selected for either pump-up or pump-down. Likewise, the level points, whether high or low, may always be operated fail-safe. The zone may occupy virtually any portion of the overall range, from 1 to 100 percent. Location of the level points may also be anywhere in the overall range, outside or inside the zone.

All set points and zone limits may be independently set for either fail-safe high or fail-safe low.

L2740 Specifications

Type

NULL-KOTE™ (coating immune)
RF Impedance sensing, remotely
adjustable solid state multiple-
point level controller.

Zone Adjustment Range

From 1 to 100 percent of probe
length.

Level Range (Probe length)

From several inches to several
hundred feet.

Capacitance Range

From 20pf to 20,000pf.

Ambient Temperature Range

-40 to 150°F (-40 to 66°C)

Relay Contacts

SPDT rated at 10 amperes,
115 Vac, resistive load.

Operating Modes

High or low fail-safe, independently
set for each point or zone.

Delay Time and Mode

Continuously adjustable 0 to 30
second (delayed turn-on and
turn-off), independently set for
each point.

Power Requirements

95 to 135 Vac, 50 to 60 Hz,
5 watts (24 Vdc and 230 Vac
available).

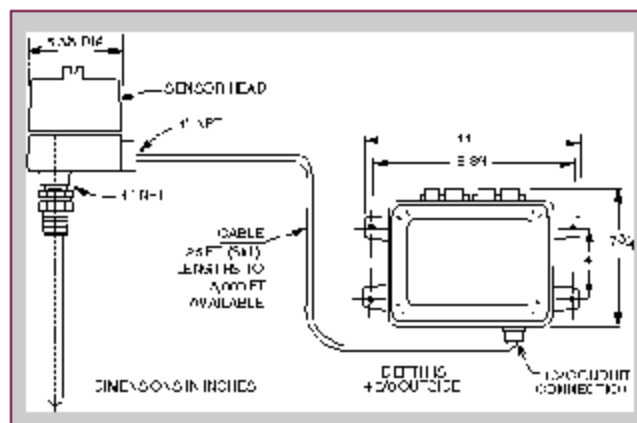
Electronics Housing (Control Unit)

Standard: NEMA 4X.
Weatherproof and
corrosion-resistant.

Optional: Explosion-
proof for Class I
Groups C & D, Class II
Groups E, F, & G.

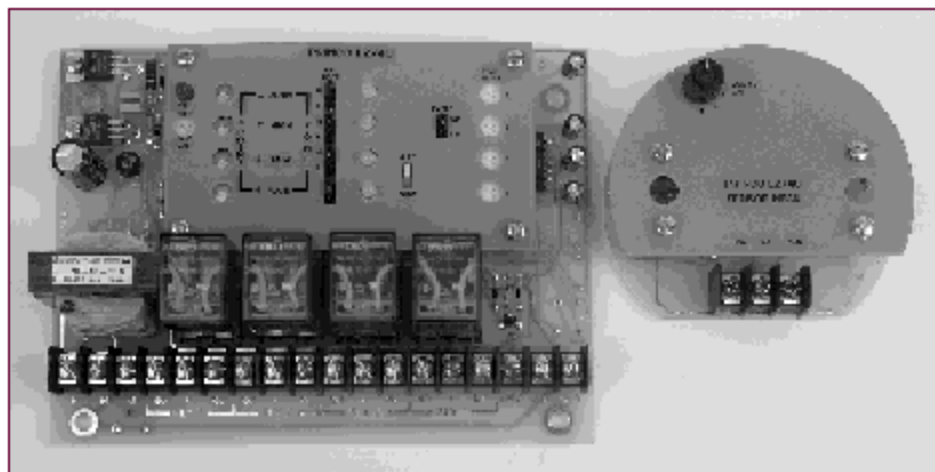
Explosion-Proof Housing for Sensor Head

Heavy-duty cast
aluminum. Explosion-
proof Class I Groups C & D,
Class II Groups E, F, & G
Weatherproof NEMA4.



NOTE:

Explosion-proof cases must be
installed to satisfy National
Electrical Code, Section 501,
and applicable local codes.



Probes

Probes used with the L2740 are
designated as the L100 Series. A
variety of types and construction
materials are available: flexible
(cable type) or rigid, heavy or light
duty Teflon™ or Kynar™ sheathing,
NPT hub or flanged mounted,
single or dual construction.

All probes are manufactured
to the exact length required. Refer
to PRINCO Continuous Probe
Selection Guide for additional
information.

All PRINCO level
instruments are
designed and
manufactured in
the UNITED STATES OF AMERICA



Bulletin L-96-7

PRINCO

PRINCO INSTRUMENTS, INC.
1020 Industrial Boulevard
Southampton, PA 18966-4095, U.S.A.
800-221-9237
(215) 355-1500 FAX (215) 355-7766

NULL-KOTE and Versa-Point are trade-
marks of PRINCO. Other trademarks or
registered trademarks in this text are the
property of their respective holders.