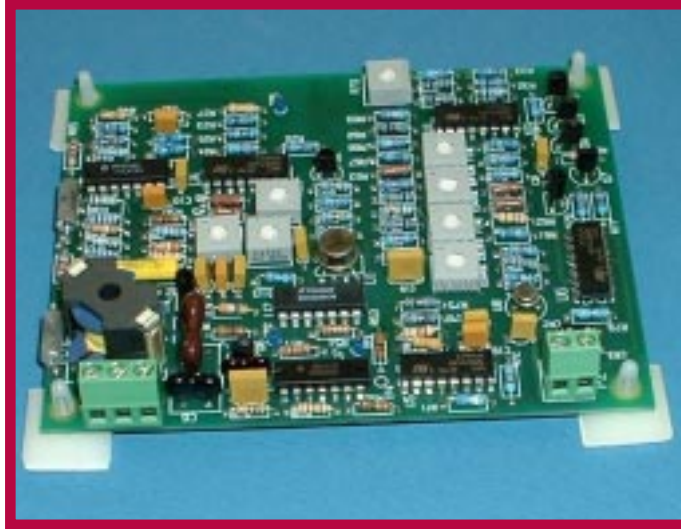


*Instrumentation designed
with the user in mind.*

LOW COST - OEM Two-Wire Level Transmitter with NULL-KOTE™ Technology



***Electronic, RF Impedance sensing,
innovative NULL-KOTE™ system,
ignores product build-up on the probe***

Features

Simple Two-Wire Connection – Means low installation cost, low power requirements and compatibility with virtually any control system.

Designed to Survive – RF immune, vibration-proof, and conformal coated circuit board (tropicalized) provide additional protection.

NULL-KOTE™ Circuitry – Makes the sensor immune to adverse effects of conductive coating build up.

Easy to Install & Set-up - Mount the electronics to your equipment, connect the sensor in the tank, and wire the output to your monitor. Although field calibration is straightforward, factory precalibration is available.

Description

The model L2632 Low Cost OEM NULL-KOTE™ two-wire RF level transmitter makes high performance level monitoring very affordable for a wide variety of equipment. Ideal for application in: beverage bottling machines, car wash equipment, vending machines, automatic filling stations, and many more. The unit can be customized to enable measurement of virtually any specific material, from low dielectric (insulating) products, such as refined oils, to conductive slurries – even viscous materials that cling to the sensor. A custom sensor is designed specifically for each application.

The output of the model L2632 is a standard 4-20 mA dc current that is directly proportional to the process level. The advanced NULL-KOTE™ circuit design means accurate readings even when conductive materials build up on the sensor. Superior temperature stability, noise immunity and conformal circuit board coating assure accurate, reliable, easy-to-install level measurement.

In millions of installations, spanning more than 85 years of experience, PRINCO process instruments have provided accurate, dependable, long lived service for all types of applications and industries.

L2632 Specifications

Type

NULL-KOTE™, OEM RF Impedance sensing two-wire, level to current transmitter.

Span Range

From 20 pF to 50,000 pF

Custom sensing probe will be designed specifically for your application. Sensor lengths available from as short as 4 inches to as long as 200 feet, application dependent.

Power Requirements

24 Vdc typical
48 Vdc maximum

Output Signal

4 to 20 mA dc

Linearity/Accuracy

±0.5% typical

Repeatability

±0.1%

Operating Temperature Range

-30 to 150°F (-34 to 66°C)

Temperature Stability

±0.015% per 1°F

APPLICATIONS



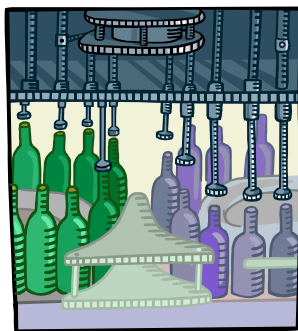
Car Wash Equipment



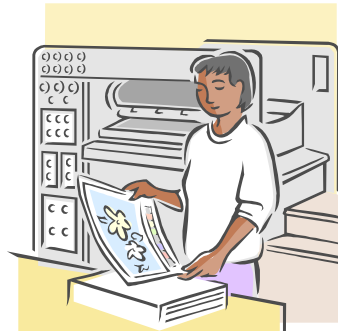
Automatic Fillers



Brewery Equipment



Bottling Machines



Printing Presses



Agricultural Machinery

...and many more.

PRINCO

1020 Industrial Highway
Southampton, PA 18966-4095, U.S.A.
(800) 221-9237 ~ (215) 355-1500
FAX (215) 355-7766
www.PrincoLevelControls.com

Copyright Princo Instruments, Inc.2006